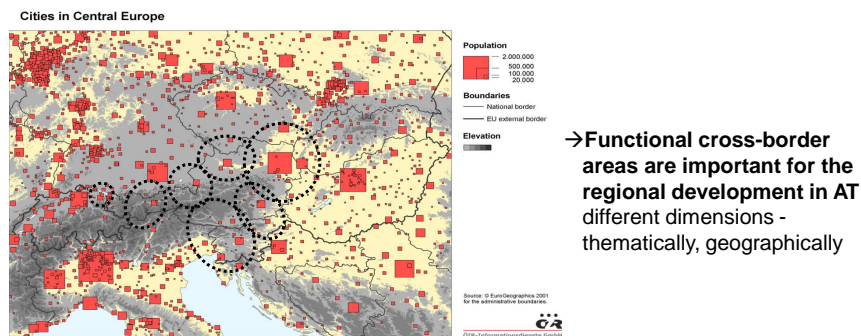


Alexandra Deimel

Cross-Border Cooperation is relevant for Austria

- More than 75% of the inhabitants in AT live within 60km from a border!
- Most of the economic activity is generated in areas near the border
- All major cities are located close to or directly to a neighbouring country
- 23 of 35 NUTS III Regions have a direct border to a neighbouring state



1

BUNDESKANZLERAMT ÖSTERREICH



All governmental levels are actors in CBC in Austria

- **Austria is a Federal State:**
legislative and executive powers are shared by the **federal and provincial (=Länder) governments**; **Communities** - as 3rd government level in AT - have full legal entity
- **All governmental levels are actors in CBC** (political level to policy expert level)
according to AT constitution: **Länder are entitled to sign bilateral agreements**
- **(Pre-)Conditions for CB-activities are diverse at different borders!**
Considering: **Initial situation** (specific cross-border-problem e.g. river/lake protection or more efficient use of resources in border area), **language, economic development, responsibilities for a specific topic** on different administrative levels (regional/national) → asymmetry in partnerships and administrative procedures, etc.
- **Basis for Cooperation:** cause-related bilateral project agreements; mutual agreements to work on one/several specific topics, EU-programmes, etc.
- **EGTC** as a suitable basis (?): so far **limited discussions and experiences in AT**: Tyrol is since 2011 part of: European Region Tyrol-South Tyrol-Trentino

2

BUNDESKANZLERAMT ÖSTERREICH



Example I: Agglomeration Scheme Rheintal

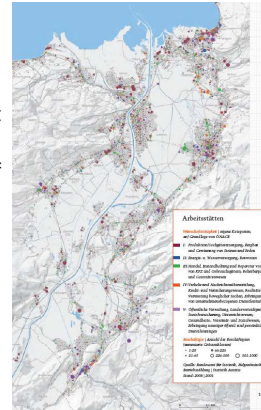
➤ **Agglomeration Scheme Rheintal**

St. Galler Rhine Valley (CH) and Vorarlberger Rhine Valley (AT)

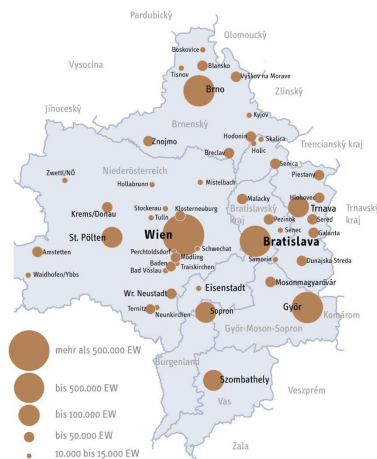
Aim: long term coordination for effective spatial planning (settlement) as well as transport infrastructure development

Basis: Agglomeration Programme for Cantons in CH (in the context of agglomeration policy) as Basis for investments of national level (CH) in infrastructure

- Decision of the Vorarlberg government to actively support the programme
- process includes regular meetings of majors and presidents of communities
- CB statistics and analysis shall support the common view and vision
- cross-border financing of projects is possible
- 1 language



Example II: CENTROPE – Central European Region



Area: 44.392 km²
Inhabitants: 6,8 Mio
members::
 3 AT Länder
 1 CZ Kraj
 2 SK Kraj
 2 HU Komitate
 9 provincial cities
 4 languages

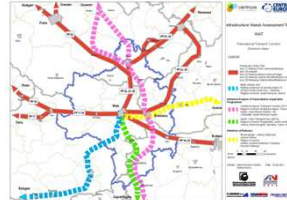


Example II: CENTROPE – Central European Region

- established in 2003; basis = political declaration of Kittsee
- Since 2012 annual meetings of political board as well as steering committee; changing chair

Main thematic areas:

- Infrastructure
- Tourism
- Knowledge region
- Human resources



CENTROPE MAP: joint information basis! <http://www.centropemap.org/>

Amongst others: one result of **INAT** (=Infrastructure Needs AssessmentT):

“... The legal, institutional and financial framework is one of the obstacles to the improvement of regional cross-border public transport ...”

- in some CENTROPE regions integrated regional public transport associations as contracting partners are missing and
- Public transport subsidy system does not allow services across borders



Example III: cross-border healthcare

Region of **Lower Austria** implemented several projects on topic of CB healthcare amongst others:

2006/2007: projects to establish a network of contacts of regional organisations working in the field of social- and health care

- 2006/2007: project in telemedicine and e-Health (partner within IIC project)

➤ Recent pilot project: **Health without frontiers**

- CB region: Lower Austria – South Moravian region
- Key Topic: available human resources in the provision of health care
- analysing the current situation and clarifying the legal framework conditions as well as analysing the employment market in the provisions of health care

➤ Recent pilot project: **Healthcross:**

- CB region: Lower Austria – South Bohemia: „divided“ city of Gmünd (hospital in the city) / Ceske Velenice (next hospital: 60 km distance)
- **obstacles:** significant wage gaps, cost differentials, language
- project provided CZ professionals or translation services during consultation hours, during project implementation no financial contribution was asked from CZ patients – bridging solution was found

→ *final conclusion are not yet available*

